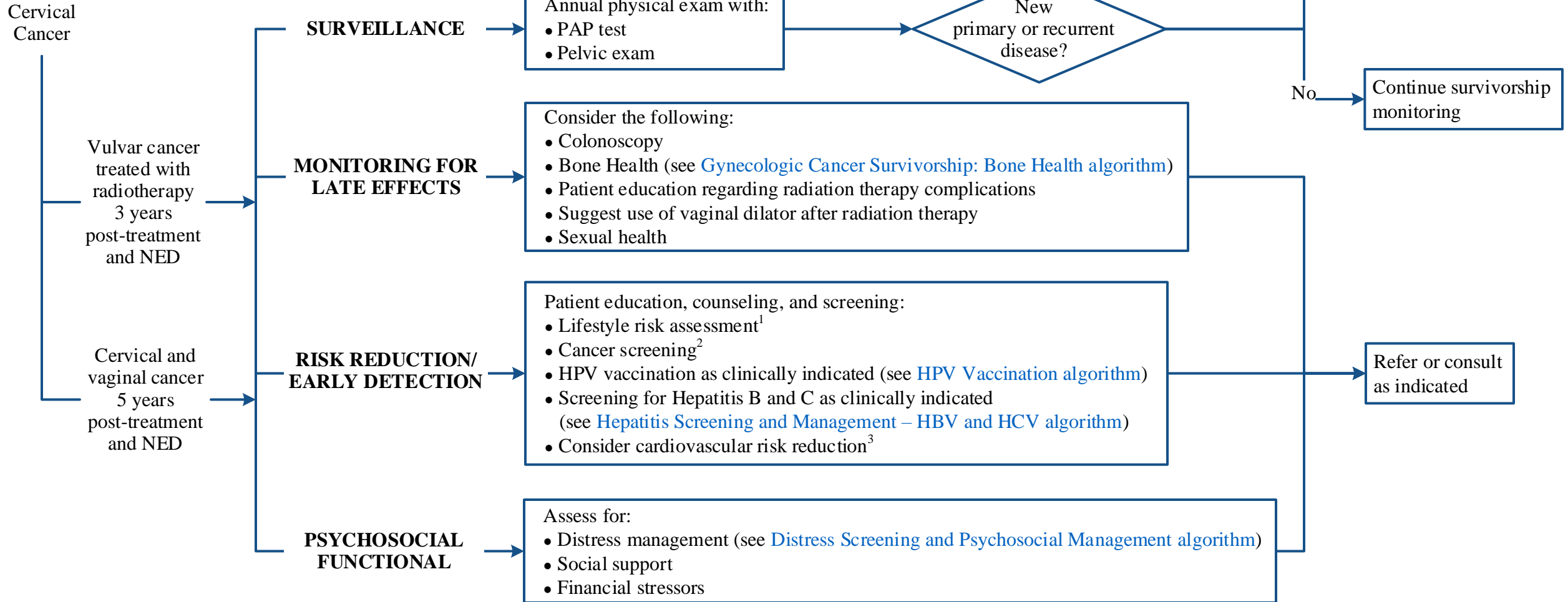


Disclaimer: This algorithm has been developed for MD Anderson using a multidisciplinary approach considering circumstances particular to MD Anderson's specific patient population, services and structure, and clinical information. This is not intended to replace the independent medical or professional judgment of physicians or other health care providers in the context of individual clinical circumstances to determine a patient's care. This algorithm should not be used to treat pregnant women.

ELIGIBILITY

CONCURRENT COMPONENTS OF VISIT

DISPOSITION



NED = no evidence of disease

¹ See [Physical Activity](#), [Nutrition](#), and [Tobacco Cessation](#) algorithms; ongoing reassessment of lifestyle risks should be a part of routine clinical practice

² Includes [breast](#), [colorectal](#), [liver](#), [lung](#), [pancreatic](#), and [skin cancer screening](#)

³ Consider use of Vanderbilt's [ABCDE's approach to cardiovascular health](#)

Disclaimer: This algorithm has been developed for MD Anderson using a multidisciplinary approach considering circumstances particular to MD Anderson's specific patient population, services and structure, and clinical information. This is not intended to replace the independent medical or professional judgment of physicians or other health care providers in the context of individual clinical circumstances to determine a patient's care. This algorithm should not be used to treat pregnant women.

SUGGESTED READINGS

- Boice Jr, J. D., Engholm, G., Kleinerman, R. A., Blettner, M., Stovall, M., Lisco, H., ... MacMahon, B. (1988). Radiation dose and second cancer risk in patients treated for cancer of the cervix. *Radiation Research*, 116(1), 3-55. doi:10.2307/3577477
- Chaturvedi, A. K., Engels, E. A., Gilbert, E. S., Chen, B. E., Storm, H., Lynch, C. F., ... Travis L. B. (2007). Second cancers among 104,760 survivors of cervical cancer: Evaluation of long-term risk. *Journal of the National Cancer Institute*, 99(21), 1634-1643. doi:10.1093/jnci/djm201
- Donovan, K. A., Taliaferro, L. A., Alvarez, E. M., Jacobsen, P. B., Roetzheim, R. G., & Wenham, R. M. (2007). Sexual health in women treated for cervical cancer: Characteristics and correlates. *Gynecologic Oncology*, 104(2), 428-434. doi:10.1016/j.ygyno.2006.08.009
- Frumovitz, M., Sun, C. C., Schover, L. R., Munsell, M. F., Jhingran, A., Wharton, J. T., ... Bodurka, D. C. (2005). Quality of life and sexual functioning in cervical cancer survivors. *Journal of Clinical Oncology*, 23(30), 7428-7436. doi:10.1200/JCO.2004.00.3996
- Kleinerman, R. A., Boice Jr, J. D., Storm, H. H., Sparen, P., Andersen, A., Pukkala, E., ... Flannery, J. T. (1995). Second primary cancer after treatment for cervical cancer. An international cancer registries study. *Cancer*, 76(3), 442-452. doi:10.1002/1097-0142(19950801)76:3<442::AID-CNCR2820760315>3.0.CO;2-L
- Lajer, H., Thranov, I. R., Skovgaard, L. T., & Engelholm, S. A. (2002). Late urologic morbidity in 177 consecutive patients after radiotherapy for cervical carcinoma: A longitudinal study. *International Journal of Radiation Oncology, Biology, Physics*, 54(5), 1356-1361. doi:10.1016/S0360-3016(02)03032-8
- Lindau, S. T., Gavrilova, N., & Anderson, D. (2007). Sexual morbidity in very long term survivors of vaginal and cervical cancer: A comparison to national norms. *Gynecologic Oncology*, 106(2), 413-418. doi:10.1016/j.ygyno.2007.05.017
- Maher, E. J., & Denton, A. (2008). Survivorship, late effects and cancer of the cervix. *Clinical Oncology*, 20(6), 479-487. doi:10.1016/j.clon.2008.04.009
- National Comprehensive Cancer Network. (2019). *Cervical Cancer* (NCCN Guideline Version 4.2019). Retrieved from https://www.nccn.org/professionals/physician_gls/pdf/cervical.pdf.
- Ohno, T., Kato, S., Sato, S., Fukuhisa, K., Nakano, T., Tsujii, H., & Arai, T. (2007). Long-term survival and risk of second cancers after radiotherapy for cervical cancer. *International Journal of Radiation Oncology, Biology, Physics*, 69(3), 740-745. doi:10.1016/j.ijrobp.2007.04.028
- Pedersen, D., Bentzen, S. M., & Overgaard, J. (1994). Early and late radiotherapeutic morbidity in 442 consecutive patients with locally advanced carcinoma of the uterine cervix. *International Journal of Radiation Oncology, Biology, Physics*, 29(5), 941-952. doi:10.1016/0360-3016(94)90387-5
- Salani, R., Backes, F. J., Fung, M. F., Holschneider, C. H., Parker, L. P., Bristow, R. E., & Goff, B. A. (2011). Posttreatment surveillance and diagnosis of recurrence in women with gynecologic malignancies: Society of Gynecologic Oncologists recommendations. *American Journal of Obstetrics and Gynecology*, 204(6), 466-478. doi:10.1016/j.ajog.2011.03.008
- Shuryak, I., Sachs, R. K., Hlatky, L., Little, M. P., Hahnfeldt, P., & Brenner, D. J. (2006). Radiation-induced leukemia at doses relevant to radiation therapy: Modeling mechanisms and estimating risks. *Journal of the National Cancer Institute*, 98(24), 1794-1806. doi:10.1093/jnci/djj497
- Storm, H. H. (1988). Second primary cancer after treatment for cervical cancer. Late effects after radiotherapy. *Cancer*, 61(4), 679-688. doi:10.1002/1097-0142(19880215)61:4<679::AID-CNCR2820610411>3.0.CO;2-S
- The National Lung Screening Trial Research Team. (2011). Reduced lung-cancer mortality with low-dose computed tomographic screening. *The New England Journal of Medicine*, 2011(365), 395-409. doi:10.1056/NEJMoa1102873
- Tominaga, K., Koyama, Y., Sasagawa, M., Obata, N., Kamata, H., Yamaguchi, E., & Nagai, M. (1995). A follow-up study of patients with cervical cancer after resection, with special emphasis on the incidence of second primary cancers. *Gynecologic Oncology*, 56(1), 71-74. doi:10.1006/gyno.1995.1011
- Vanderbilt Cardio-Oncology Program. (2017). *Know Your ABCDE's*. Retrieved from <http://www.cardioonc.org/2017/08/29/know-your-abcs/>
- Werner-Wasik, M., Schmid, C. H., Bornstein, L. E., & Madoc-Jones, H. (1995). Increased risk of second malignant neoplasms outside radiation fields in patients with cervical carcinoma. *Cancer*, 75(9), 2281-2285. Retrieved from [https://onlinelibrary.wiley.com/doi/pdf/10.1002/1097-0142\(19950501\)75:9%3C2281::AID-CNCR2820750915%3E3.0.CO;2-Y](https://onlinelibrary.wiley.com/doi/pdf/10.1002/1097-0142(19950501)75:9%3C2281::AID-CNCR2820750915%3E3.0.CO;2-Y)
- Zippin, C., Lum, D., Kohn, H. I., & Bailar 3rd, J. C. (1981). Late effects of radiation therapy for cancer of the uterine cervix. *Cancer Detection and Prevention*, 4(1-4), 487-492.

Disclaimer: *This algorithm has been developed for MD Anderson using a multidisciplinary approach considering circumstances particular to MD Anderson's specific patient population, services and structure, and clinical information. This is not intended to replace the independent medical or professional judgment of physicians or other health care providers in the context of individual clinical circumstances to determine a patient's care. This algorithm should not be used to treat pregnant women.*

DEVELOPMENT CREDITS

This survivorship algorithm is based on majority expert opinion of the Gynecologic Survivorship work group at the University of Texas MD Anderson Cancer Center. It was developed using a multidisciplinary approach that included input from the following:

Therese Bevers, MD (Cancer Prevention)
Diane C. Bodurka, MD (Education)
Robin Coyne, FNP, RN (Cancer Prevention)
Terri Earles, WHNP-BC (Gyn Onc & Reproductive Med)
David M. Gershenson, MD (Gyn Onc & Reproductive Med)
Thoa Kazantsev, BSN, RN, OCN♦
Shiney Kurian, WHNP-BC (Gyn Onc & Reproductive Med)
Marita Lazzaro, RN, MS, ANP (Cancer Prevention)
Paula Lewis-Patterson, DNP, RN, NEA-BC (Cancer Survivorship)

♦ Clinical Effectiveness Development Team