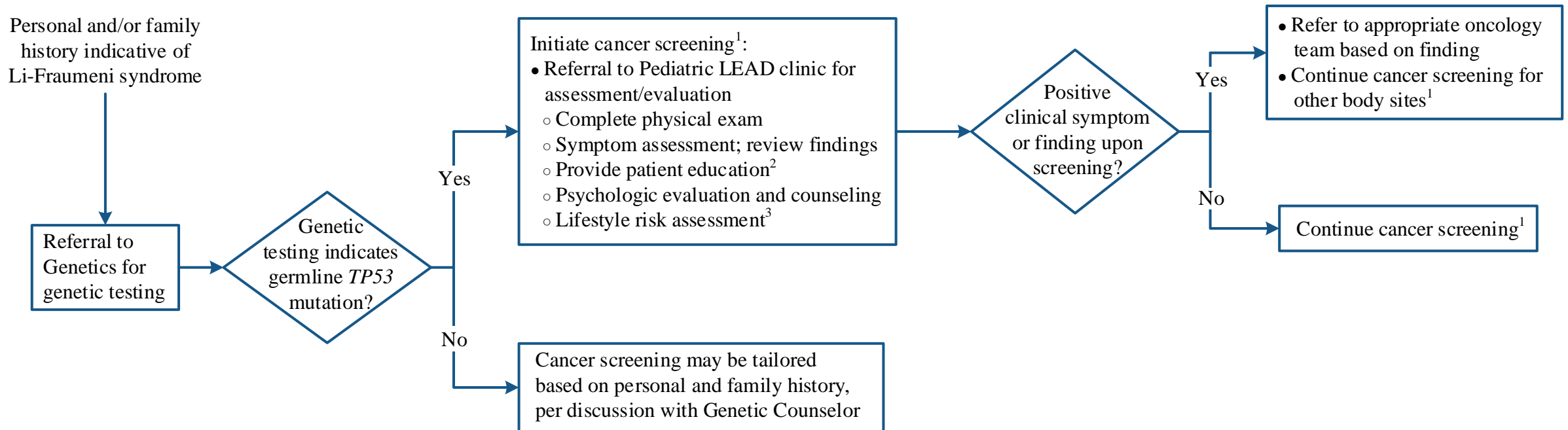


Disclaimer: This algorithm has been developed for MD Anderson using a multidisciplinary approach considering circumstances particular to MD Anderson's specific patient population, services and structure, and clinical information. This is not intended to replace the independent medical or professional judgment of physicians or other health care providers in the context of individual clinical circumstances to determine a patient's care.

## PRESENTATION

## ASSESSMENT

## RECOMMENDATION



LEAD clinic = Li-Fraumeni Syndrome Education and Early Detection clinic

<sup>1</sup> See Screening Guidelines on [Page 2](#)

<sup>2</sup> Patient Education - Li-Fraumeni Syndrome Education and Early Detection (LEAD) Pediatric Screening Program

<sup>3</sup> See [Physical Activity](#), [Nutrition](#), and [Tobacco Cessation](#) algorithms; ongoing reassessment of lifestyle risks should be a part of routine clinical practice

Disclaimer: This algorithm has been developed for MD Anderson using a multidisciplinary approach considering circumstances particular to MD Anderson's specific patient population, services and structure, and clinical information. This is not intended to replace the independent medical or professional judgment of physicians or other health care providers in the context of individual clinical circumstances to determine a patient's care.

## Li-Fraumeni Syndrome Education and Early Detection (LEAD) – Pediatric Screening Guidelines

Cancer	Age			Frequency
	0-1 Year	1-10 Years	10-20 Years	
General	Physical exam/targeted review of systems • Neurological exam	Physical exam/targeted review of systems • Neurological exam	Physical exam/targeted review of systems • Neurological exam • Thyroid • Skin	Every 6 months
Adrenocortical Tumor (ACT) and Others	• Education of signs and symptoms (virilization, Cushing's syndrome, hypertension) • Testosterone, DHEAS, HCG, AFP, ACTH, urinalysis	• Education of signs and symptoms (virilization, Cushing's syndrome, hypertension) • Testosterone, DHEAS, HCG, AFP, ACTH, urinalysis	• Education of signs and symptoms (virilization, Cushing's syndrome, hypertension) • Testosterone, DHEAS, HCG, AFP, ACTH, urinalysis	• Every 6 months (until 10 years old)  • Annually (10-20 years old)
	Ultrasound of abdomen and pelvis	Ultrasound of abdomen and pelvis	Whole body MRI	• Every 6 months for ultrasound • Annually for whole body MRI
Brain	• Education of signs and symptoms (vomiting, headaches, vision changes) • Brain MRI <sup>1</sup>	• Education of signs and symptoms (vomiting, headaches, vision changes) • Brain MRI <sup>1</sup>	• Education of signs and symptoms (vomiting, headaches, vision changes) • Brain MRI <sup>1</sup>	Annually
Sarcoma (begin at 2-3 years – based on family history/clinical judgement)	N/A	Whole body MRI	Whole body MRI	Annually
Leukemia/ Lymphoma	• Education of signs and symptoms (anemia, pallor, fatigue, bruising, petechiae) • CBC with differential, erythrocyte sedimentation rate, lactate dehydrogenase	• Education of signs and symptoms (anemia, pallor, fatigue, bruising, petechiae) • CBC with differential, erythrocyte sedimentation rate, lactate dehydrogenase	• Education of signs and symptoms (anemia, pallor, fatigue, bruising, petechiae) • CBC with differential, erythrocyte sedimentation rate, lactate dehydrogenase	• Every six months (until 10 years)  • Annually (10-20 years old)
Melanoma	N/A	N/A	Refer to Dermatology service as necessary	Annually

<sup>1</sup> First MRI with contrast; thereafter without contrast if previous MRI normal and no new abnormality

Disclaimer: This algorithm has been developed for MD Anderson using a multidisciplinary approach considering circumstances particular to MD Anderson's specific patient population, services and structure, and clinical information. This is not intended to replace the independent medical or professional judgment of physicians or other health care providers in the context of individual clinical circumstances to determine a patient's care.

---

## SUGGESTED READINGS

- Ballinger, M., Best, A., Mai, P., Khincha, P., Loud, J., Peters, J., . . . Savage, S. (2017). Baseline surveillance in Li-Fraumeni syndrome using whole-body magnetic resonance imaging: A meta-analysis. *JAMA Oncology*, 3(12), 1634–1639. <https://doi.org/10.1001/jamaoncol.2017.1968>
- Bojadzieva, J., Amini, B., Day, S., Jackson, T., Thomas, P., Willis, B., . . . Strong, L. (2018). Whole body magnetic resonance imaging (WB-MRI) and brain MRI baseline surveillance in TP53 germline mutation carriers: Experience from the Li-Fraumeni Syndrome Education and Early Detection (LEAD) clinic. *Familial Cancer*, 17(2), 287–294. <https://doi.org/10.1007/s10689-017-0034-6>
- Kratz, C., Achatz, M., Brugieres, L., Frebourg, T., Garber, J., Greer, M., . . . Malkin, D. (2017). Cancer screening recommendations for individuals with li-fraumeni syndrome. *Clinical Cancer Research*, 23(11), e38-e45. <https://doi.org/10.1158/1078-0432.CCR-17-0408>
- Mai, P., Khincha, P., Loud, J., DeCastro, R., Bremer, R., Peters, J., . . . Savage, S. (2017). Prevalence of cancer at baseline screening in the national cancer institute li-fraumeni syndrome cohort. *JAMA Oncology*, 3(12), 1640-1645. <https://doi.org/10.1001/jamaoncol.2017.1350>
- Saya, S., Killick, E., Thomas, S., Taylor, N., Bancroft, E., Rothwell, J., . . . Eeles, R. (2017). Baseline results from the UK SIGNIFY study: A whole-body MRI screening study in TP53 mutation carriers and matched controls. *Familial Cancer*, 16(3), 433-440. <https://doi.org/10.1007/s10689-017-9965-1>
- Villani, A., Shore, A., Wasserman, J. D., Stephens, D., Kim, R., Druker, H., . . . Malkin, D. (2016). Biochemical and imaging surveillance in germline TP53 mutation carriers with li-fraumeni syndrome: 11 year follow-up of a prospective observational study. *The Lancet Oncology*, 17(9), 1295-1305. [https://doi.org/10.1016/S1470-2045\(16\)30249-2](https://doi.org/10.1016/S1470-2045(16)30249-2)
- Villani, A., Tabori, U., Schiffman, J., Shlien, A., Beyene, J., Druker, H., . . . Malkin, D. (2011). Biochemical and imaging surveillance in germline TP53 mutation carriers with li-fraumeni syndrome: A prospective observational study. *The Lancet Oncology*, 12(6), 559-567. [https://doi.org/10.1016/S1470-2045\(11\)70119-X](https://doi.org/10.1016/S1470-2045(11)70119-X)

Disclaimer: *This algorithm has been developed for MD Anderson using a multidisciplinary approach considering circumstances particular to MD Anderson's specific patient population, services and structure, and clinical information. This is not intended to replace the independent medical or professional judgment of physicians or other health care providers in the context of individual clinical circumstances to determine a patient's care.*

---

## DEVELOPMENT CREDITS

This screening algorithm is based on majority expert opinion of the Pediatric Li-Fraumeni Syndrome work group at the University of Texas MD Anderson Cancer Center. It was developed using a multidisciplinary approach that included input from the following:

Behrang Amini, MD, PhD (Diagnostic Radiology-Musculoskeletal Imaging)  
Martha Askins, PhD (Pediatrics)  
Therese Bevers, MD (Cancer Prevention)  
Jessica Corredor, MS (Genetics)  
Najat C. Daw, MD (Pediatrics)<sup>‡</sup>  
Wendy Garcia, BS<sup>♦</sup>  
Jason M. Johnson, MD (Neuroradiology)  
Susan Peterson, PhD, MPH (Behavioral Science)  
Rhonda Robert, PhD (Pediatrics)  
Louise Strong, MD (Genetics)<sup>‡</sup>  
Whitney Throckmorton, MPAS (Pediatrics)  
Danielle Underferth, MS (Strategic Communications)  
Steven Waguespack, MD (Endocrine Neoplasia and HD)  
Brandy Willis, MBA, BS, AAB (Diagnostic Imaging)

<sup>‡</sup> Core Development Team

<sup>♦</sup> Clinical Effectiveness Development Team